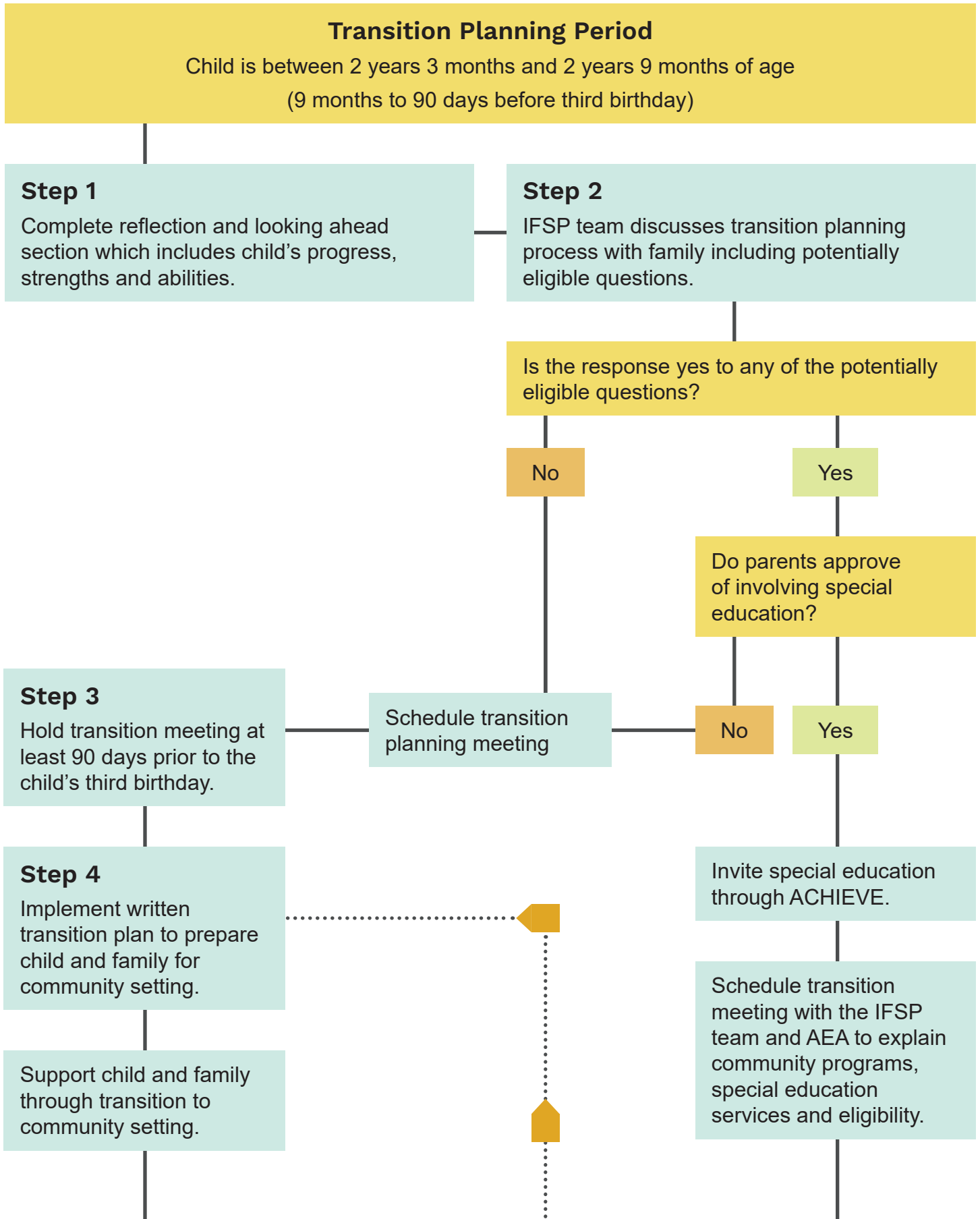


Early ACCESS Transition Flow Chart



Refer to other programs, assist with developing plans, discuss requirements/considerations for other services.

Exit the child from Early ACCESS by the child's third birthday.

Step 6
Support child and family through transition to special education.

Step 3
Hold transition meeting to develop written plan at least 90 days prior to the child's third birthday.

Are there data to suspect disability?

No Yes

Do the parents consent to special education evaluation (FIIE)?

No Yes

Step 4
Implement written transition plan to prepare child and family for special education.

Step 5
Part B conducts special education evaluation (FIIE) within required timelines.

Is the child eligible for special education?

No Yes

