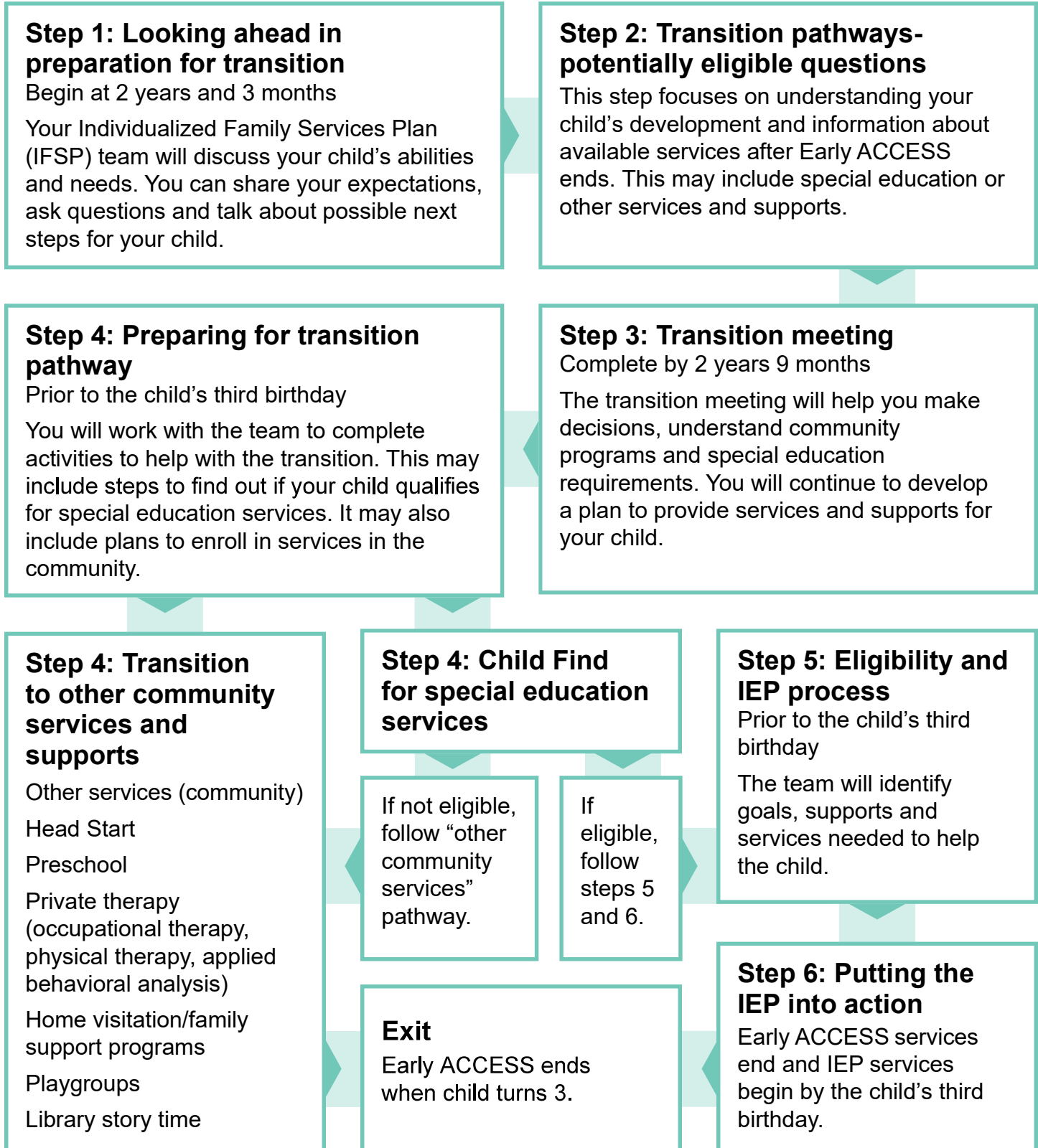


Early ACCESS services end when a child turns three. To support this transition, there is a process called transition planning that begins as early as when your child is 2 years and 3 months old. Ideally, plans are created at least 3 months before their third birthday to ensure a smooth transition.



Program Comparison

	Early ACCESS IDEA Part C	Special Education IDEA Part B	Other Services (Community)
Cost	No cost to families	No cost to families	Depends on provider
Eligibility	Diagnosed condition or 25% delay	Disability and need for specialized education supports	Depends on provider, may or may not require child to have a delay or disability
Service Provision	Services provided through IFSP and focus on the needs of family to support child	Individualized Education Program (IEP) focuses on educational needs of child	Provider will work with you to develop plan
Location	Home or other natural setting (childcare, preschool, places in the community)	Least restrictive environment-preschool classroom	Depends on provider
Provider	Provider coaches parents to support development	Provider directed	Usually provider directed